



# BOONE COUNTY TRANSPORTATION PLAN UPDATE 2025



## Executive Summary

December  
2025



BOONE COUNTY  
KENTUCKY



# INTRODUCTION

Safe, easy travel to and from home, work, and play is a cornerstone of a thriving community. Whether you're putting the kids on the bus, driving to work, heading to church, biking to your favorite park, or getting your morning miles in on Tower Loop, we want to help you get where you want to go. This Transportation Plan identifies and prioritizes transportation improvement projects across the county and helps guide planning and funding decisions made at the county and state level. It also keeps the travel issues that matter most to Boone Countians top of mind.

The 2025 Transportation Plan builds upon the foundation of previous planning efforts, including the county's comprehensive land use and growth strategy, Our Boone County: Plan 2040; the Ohio-Kentucky-Indiana Regional Council of Governments' (OKI) 2050 Metropolitan Transportation Plan; and the Kentucky Transportation Cabinet's (KYTC) Recommended Highway Plan. This plan update reimagines how people and goods move by emphasizing safety, multimodal access, and innovation, while positioning Boone County to secure the funding needed to complete improvement projects.

## GETTING YOU WHERE YOU WANT TO GO



“Here in Boone County, our greatest strength is you—the people who live, work, and raise families here. Your input and experiences with our current transportation system are guiding how we plan and invest for the future. Because most of our major roads are state or federal routes, this plan also gives us a stronger position to advocate for improvements that will shape transportation that truly reflect your needs and support a better quality of life. This plan is built on your voice, your priorities, and our shared commitment to creating a safer, stronger future for everyone who calls Boone County home.”

**Judge/Executive Gary Moore**  
Boone County Fiscal Court



Porter Road near Walton-Verona Elementary School. Recent upgrades improved safety and access while preserving the rural character.



Intersection of US 42 and KY 237 (Gunpowder Road). Suburban intersections experience congestion, showing the need for cost-efficient improvements that reduce delays and improve safety.



Crosswalk at US 42 and Frogtown Road near Ryle High School. This plan takes a multimodal approach, recommending improvements that make travel safer and easier for everyone, whether walking, biking, riding transit, or driving.



# WHY UPDATE THE PLAN?

The Transportation Plan was last updated in 2017. Boone County staff want to ensure that our local transportation system meets the changing needs and interests of our community, no matter if you travel by car, by bus, on a bike, or even on foot.

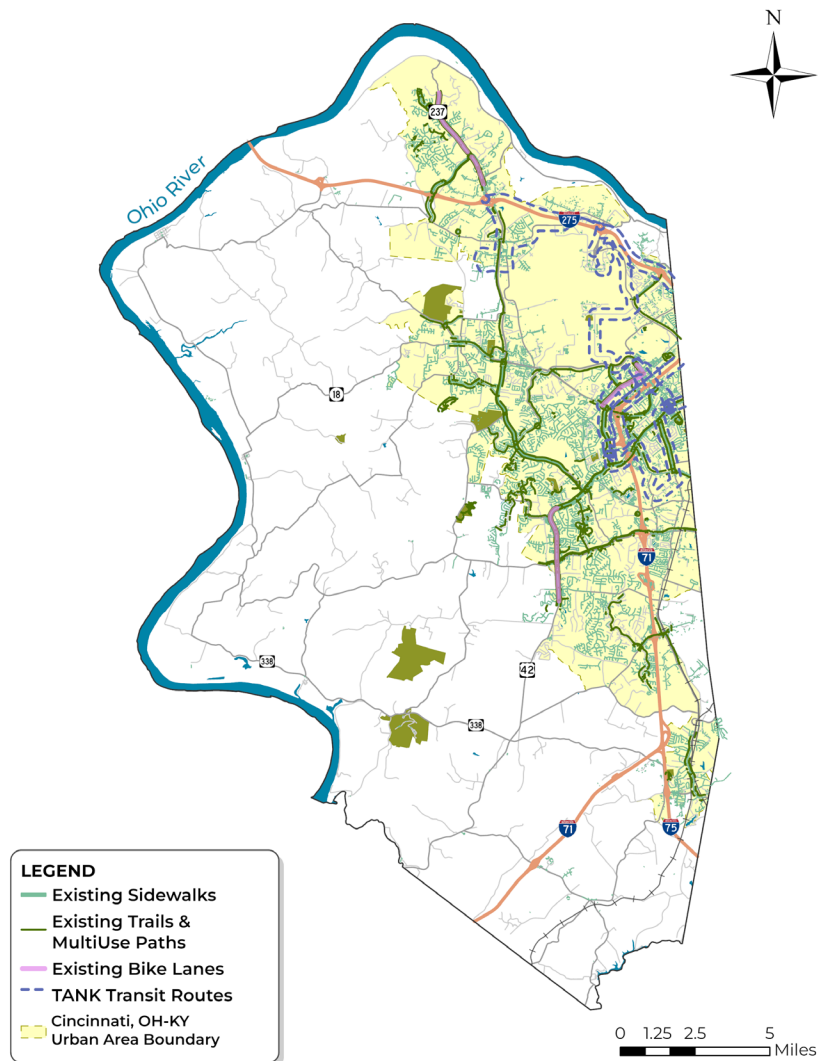
Since the last plan update, Boone County has grown in population, employment, and economic activity, which has increased demand on every part of the county's transportation system. With more than 144,000 residents and more than 94,000 jobs, Boone County's role within the Greater Cincinnati region continues to expand, making strategic investment more important than ever.

The 2025 Transportation Plan builds on decades of progress by using the latest data, traffic modeling, and community input to assess how people and goods move across the county now and in the future. This update is a blueprint designed to guide investments through 2050.

This Plan will help the county make smart use of taxpayer dollars by securing funding, advocating for shared priorities with state and regional agencies, and coordinating strategic investments that maximize value while enhancing the quality of life for residents, visitors, and businesses.

**This Plan prioritizes needs and helps secure the funding to complete projects that will strengthen the county's transportation network.**

## Boone County Transportation Network



# GOALS

The Transportation Plan is organized around three overarching goals. The **Existing and Future Conditions Report** discusses goals and objectives in more technical detail.

## GOAL A

Plan transportation and land use together to build a system that supports growth, improves connections, and protects Boone County's unique character.

**SMOOTHER,  
SAFER TRAVEL**

### HOW WE'LL GET THERE:

1. **Prioritize What We Have:** Improve and maintain the existing system to reduce impacts on our communities.
2. **Coordinate Smarter:** Align efforts across agencies to support better movement of people and goods in coordination with local land use goals.
3. **Be Accessible:** Ensure transportation works for everyone, including those who rely on transit or have limited mobility.
4. **Thoughtful Planning:** Build connected infrastructure that supports strategic growth and future needs.

## GOAL B

Improve transportation access to support quality of life and a strong local economy with safe, walkable communities and a well-connected road network.

**BETTER  
CONNECTED  
COMMUNITIES**

### HOW WE'LL GET THERE:

1. **Work Together:** Align individual community plans with smart infrastructure investments.
2. **Keep Traffic Moving:** Develop policies that balance traffic flow and community character.
3. **Connect Smarter:** Build new connector roads where needed to ease congestion and improve neighborhood access to main roads.
4. **Be a Good Neighbor:** Reduce pollution, noise, and water runoff from transportation projects.
5. **Plan Ahead:** Prepare now for future technological advancements and alternative travel options.
6. **Promote Walkability:** Design new developments to include safe, easy pedestrian and bicycle access to transit, parks, and public spaces.

## GOAL C

Ensure freight moves safely through Boone County while reducing its impact on surrounding communities.

**STRONGER  
ECONOMY**

### HOW WE'LL GET THERE:

1. **Plan Ahead:** Maintain and improve existing infrastructure and prepare for future freight needs now.
2. **Use Smart Tech:** Use innovative technologies to reduce the impact of freight operations and enhance the freight-movement system.
3. **Focus on Safety & Efficiency:** Use smart, forward-thinking solutions to improve safety and expand freight capacity.
4. **Lead Regionally, Act Locally:** Use local industry expertise to support freight-movement needs while minimizing impacts on our roads and communities.



# KEY ISSUES AND NEEDS

The Transportation Plan used existing conditions data, existing local and regional plans, and extensive stakeholder and community conversations to identify the key transportation challenges facing Boone County today and in the future. As further detailed in the **Issues and Needs Assessment Report**, the analysis focused on seven categories. For each of these categories, issues and needs were outlined along with next steps to address them. Some of the key takeaways are listed below.

## STAKEHOLDER AND COMMUNITY PRIORITIES

- New developments have outpaced infrastructure improvements.
- Lack of multimodal access remains a challenge.
- When asked to prioritize project types, the top priorities included: reduce congestion, improve safety, and reduce the impact of freight vehicles.

## TRAVEL DEMAND MODEL (TRAFFIC OPERATIONS)

- Corridors like KY 18, KY 237, and US 42 are projected to have worsening congestion.
- Secondary and residential roads are likely to receive spillover traffic from major corridors, resulting in new congestion hot spots in areas not designed for high volumes.

## SAFETY (CRASH ANALYSIS)

- Fatal crashes are on a decreasing trend; however, fatal crashes continue to occur.
- Serious injury crashes are remaining steady.
- Crashes involving bicyclists and pedestrians are decreasing.

## BICYCLE AND PEDESTRIAN FACILITIES ANALYSIS

- Many gaps exist in bicycle and pedestrian facilities, creating lack of access.
- All existing bike lanes are unprotected and located on roadways with speed limits of 45 mph, where many bicyclists may feel unsafe riding.

## FREIGHT ANALYSIS

- Lack of truck parking continues to pose safety and operational challenges along I-71/75.
- Pavement and bridge conditions are deteriorating on roads with high truck volumes.
- Truck volumes are expected to continue to grow by 2050, especially in the southern and western portions of the county.

## COMPREHENSIVE PLAN ANALYSIS

- The county's road network has become insufficient in certain areas for the current volumes it now supports.
- New developments raise concerns about preserving rural character and limiting sprawl.

## TOURISM ANALYSIS

- Limited public transit makes most attractions only accessible by car.
- Lack of branding and signage reduces opportunities to leave a strong first impression.



# COMMUNITY & STAKEHOLDER ENGAGEMENT

Community voices shaped every stage of the Transportation Plan. Between April and July 2025, 12,200 people visited the Public Input website, and submitted 37,881 responses to surveys and maps and left an additional 1,415 comments on open-ended questions. People shared what they value about Boone County and what they hope to see improved on the transportation network. The top themes included improved safety, expanded pedestrian and bicyclist access, less truck traffic, better public transit options, and preserving farmland and rural character.

A public meeting held on April 25, 2025 brought together 150 attendees and interactive activities allowed participants to respond to questions about current issues and to set a vision for the future.

To reach people where they already are, county staff also attended 14 local pop-up events between June 14 and July 19, 2025. These events were held at the Boone County Fair, business gatherings, farmer’s markets, and other summer celebrations. Residents shared feedback about potential projects that helped decide which projects were included in the final plan.

The stakeholder outreach effort included talking to leaders from these agencies:

- Ohio-Kentucky-Indiana Regional Council of Governments (OKI)
- Kentucky Transportation Cabinet (KYTC)
- Transit Authority of Northern Kentucky (TANK)
- Cincinnati/Northern Kentucky International Airport (CVG)
- DHL Express
- City of Florence
- City of Union
- City of Walton
- Judge/Executive Gary Moore
- Commissioner Cathy Flaig
- Commissioner Chet Hand
- Commissioner Jesse Brewer

This combination of public input and stakeholder collaboration ensures that this Plan reflects both community values and regional priorities, creating a shared vision for getting Boone County residents safely and efficiently where they want to go, today and in the future.

Website Views	12,200
Online Responses: <i>(surveys and maps)</i>	37,881
Online Comments:	1,415
Public Meeting Attendees:	150
Pop-Up-Events:	14
Stakeholder Meetings:	12

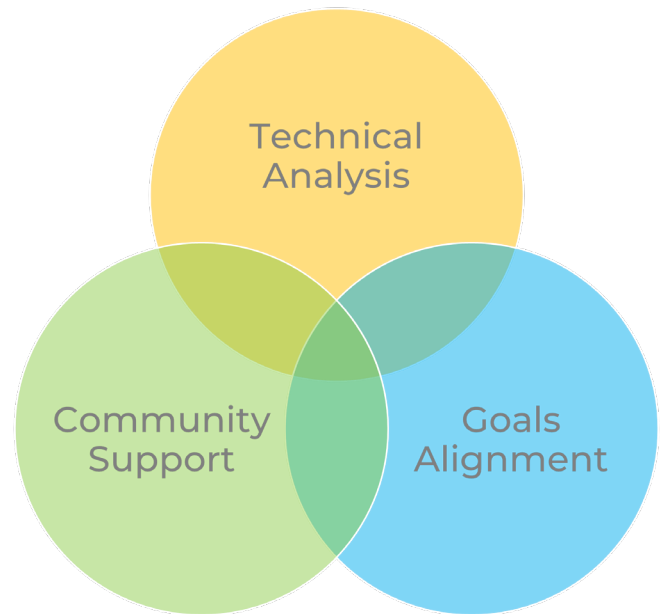
## Words to Describe the Vision for Boone County’s Transportation System



# UNIVERSE OF PROJECTS

A universe of projects was developed to identify transportation needs in the county over the next 25 years, but more guidance was needed to determine a timeframe to complete implementation as well as prioritize the most critical projects over the less critical projects, especially given the likelihood that needs will exceed available funding.

To assist in this decision making, an evaluation process was developed to include three overall perspectives. The collective intent is to prioritize projects that are most effective at addressing all three perspectives. The resulting list of prioritized projects was carefully reviewed by Boone County staff. As new data is analyzed, new funding opportunities emerge, and community input is gathered over time, this project list will continue to be refined by Boone County in partnership with KYTC, OKI, TANK, CVG airport, and the cities of Florence, Union, and Walton.



A roundabout at Pleasant Valley Road (KY 237) and Camp Ernst Road.

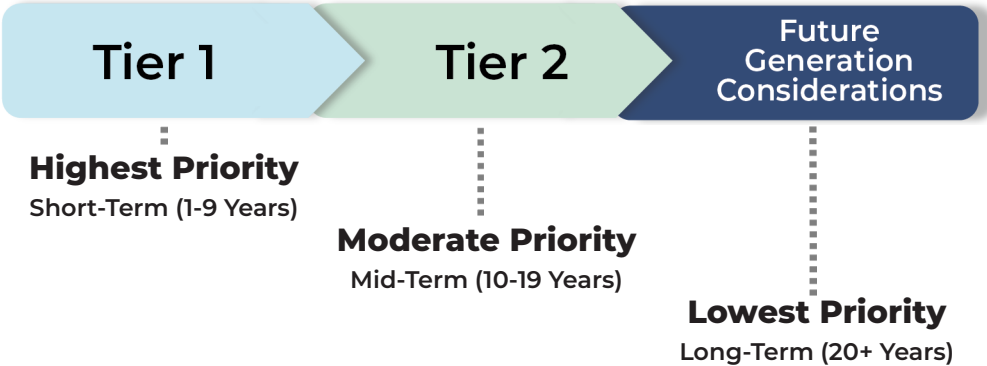
This project, completed in 2022, introduced a modern roundabout to replace a rural “T” intersection, improving traffic flow and safety. A multi-use path was also constructed to connect nearby neighborhoods.

The center of the roundabout features low-height landscaping that enhances the corridor’s appearance and sense of place without affecting visibility.

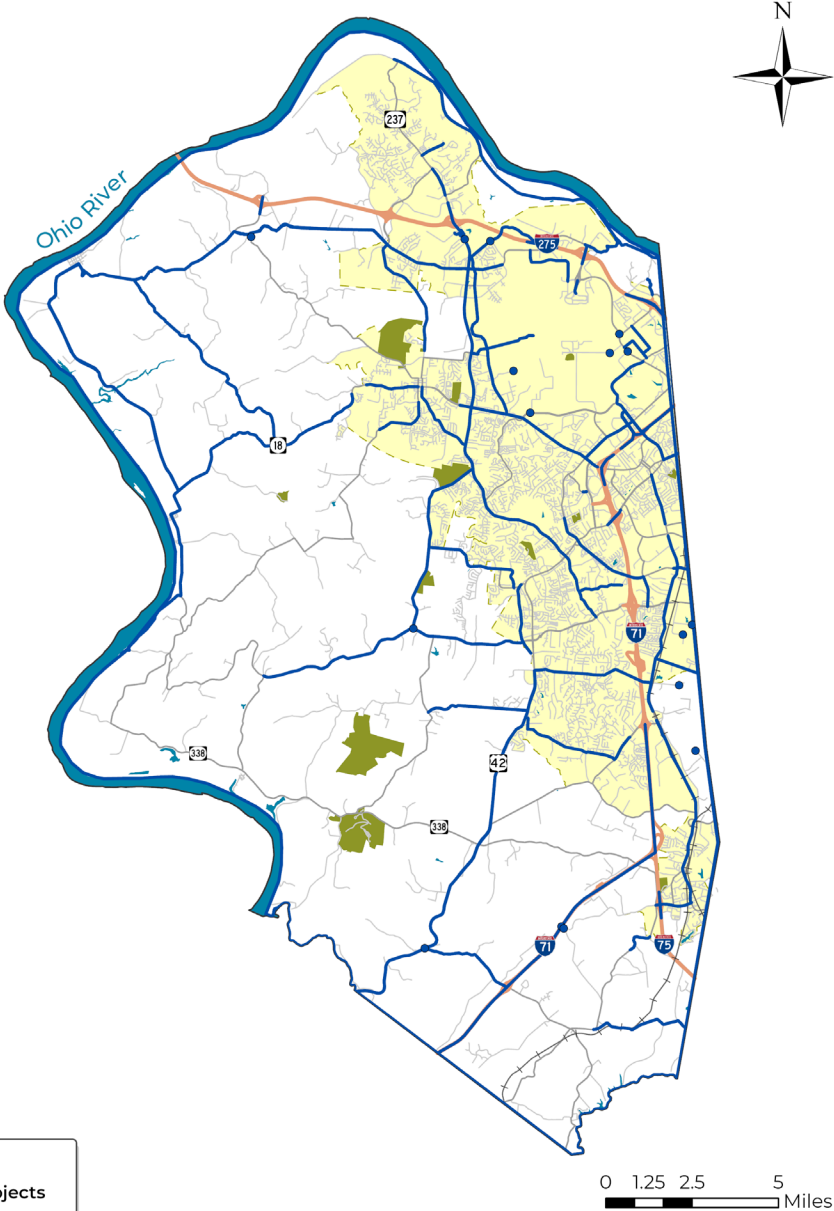
This is an example of an “Operational & Safety” primary project type and a “Bike/Ped” secondary project type.



Projects are split into three tiers based on their priority level and the likelihood they would be completed in the short-term, mid-term, or long-term



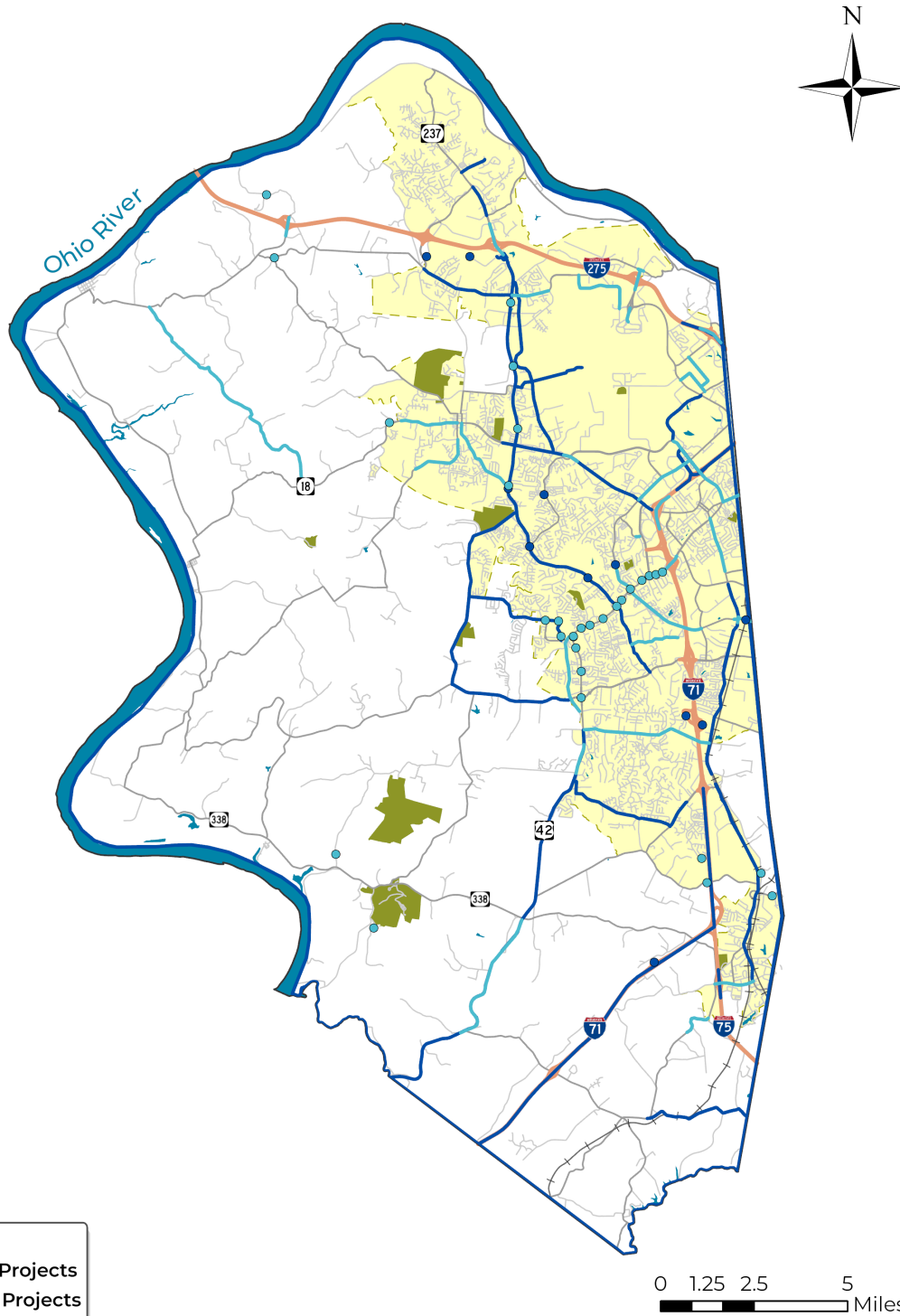
**All Projects Included  
in the Transportation Plan**



**Tier 1** projects are the highest priority projects and represent the best opportunities to substantively improve the Boone County Transportation System. These projects can deliver measurable public benefit in the near term. Funding for these projects will consistently be advocated for and ideally the projects would move forward in the next 1-9 years.

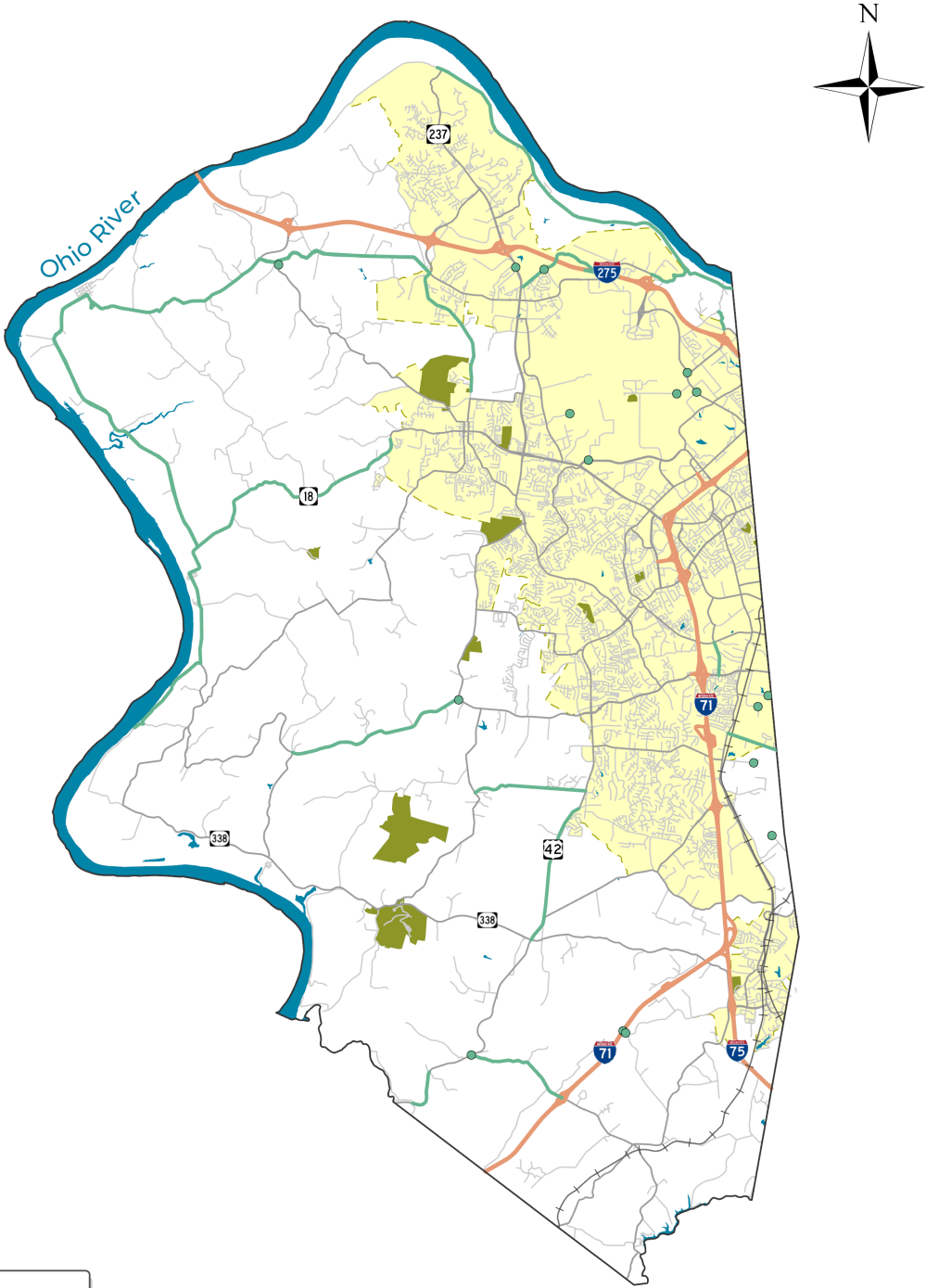
**Tier 2** projects are of moderate priority and are expected to take longer to move forward. While these projects also include substantive improvements, their priority falls behind Tier 1 projects. Funding for these projects is expected to be sought after between years 10-19. These projects may advance sooner if new funding or partnership opportunities arise.

### Tier 1 and Tier 2 Projects

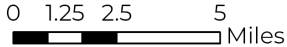


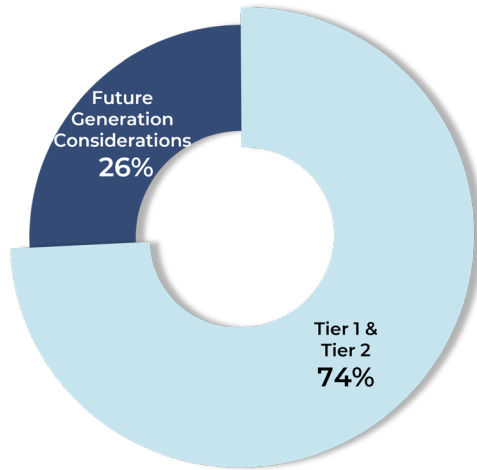
**Future Generation Considerions (Tier 3)** projects are long-term needs that may help address emerging or projected future demands and will be re-evaluated as conditions and priorities evolve. While not ready for immediate investment, identifying them today ensures Boone County continues to plan responsibly for future infrastructure demands. If future evaluations identify these projects as needs, funding would begin to be sought 20+ years in the future.

### Future Generation Consideration (Tier 3) Projects



**LEGEND**  
● Tier 3 Projects





### Number of Projects by Priority Tier:

Approximately three-quarters of projects are Tier 1 (high priority) or Tier 2 (moderate priority), while one-quarter are Future Generation Considerations.

### Number of Projects by Area of County:

- Hebron/Burlington: 37
- Florence: 22
- Richwood/Union: 20
- Western Boone County: 17
- Walton-Verona: 11
- Entire County: 3



Highly visible crosswalk markings, signage, pedestrian-scaled lighting, and fewer vehicular travel lanes make this an inviting place to walk on Main Street approaching Banklick Street in Florence.

### Number of Projects by Agency:

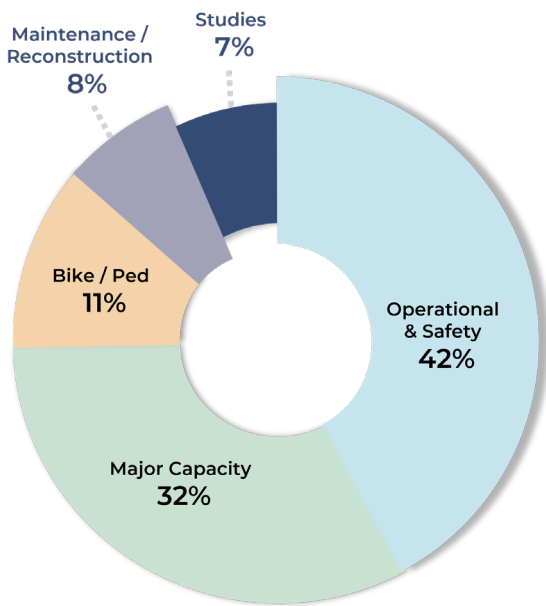
- KYTC: 66
- Boone County: 39
- Florence: 1
- Union: 1
- CVG Airport: 1
- TANK: 1

**Total Miles of Projects:**

**254**

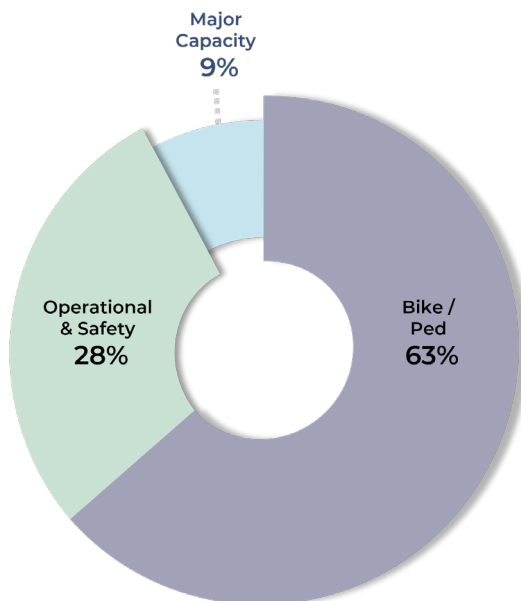


A message board sign on Donaldson Highway at the Boone/Kenton County line warns drivers of a new traffic pattern due to ongoing construction of a transportation improvement project.



**Number of Projects by Primray Project Type:**

Most projects focus on improving operations and safety (42%) and expanding capacity (32%), with additional investments in bike and pedestrian projects (10%), maintenance or reconstruction (8%), and studies (7%).



**Number of Projects by Secondary Project Type:**

Among 46 projects that include secondary improvements, 63% feature bike or pedestrian components, 28% address operational and safety needs, and 9% provide major capacity enhancements.



# CONCLUSION

For decades, Boone County has made thoughtful, steady progress in improving transportation for residents, businesses, and visitors. From safer intersections and expanded roadways; to aesthetic treatments like landscaping and enhancing the community charm; to new multi-use paths and better connections between communities, these investments show what can be accomplished through careful planning and collaboration.

This Transportation Plan continues that tradition of planning by focusing on investing in projects that will deliver the greatest benefit to residents. It builds on a proven track record of success while setting clear, achievable priorities for the decades ahead. By aligning land use and infrastructure investments and embracing technology, Boone County is well-positioned to sustain its economic momentum while improving quality of life for all residents.

Through continued collaboration, this Plan will guide investments and “get Boone County where it needs to go” both today and for generations to come.



The Pleasant Valley Road (KY 237) corridor with Valley View Drive near the bottom of the photo.

This improvement project, completed in 2022, widened the road to accommodate increased traffic, added bicycle and pedestrian infrastructure, and fixed the road's horizontal and vertical geometry. This project brings substantial economic and safety benefits to the residents of Boone County.

This is an example of a “Major Capacity” primary project type and a “Bike/Ped” secondary project type.





Prepared By:



BOONE COUNTY  
KENTUCKY

