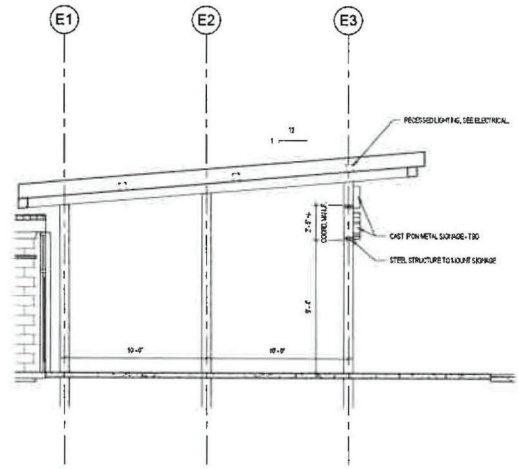


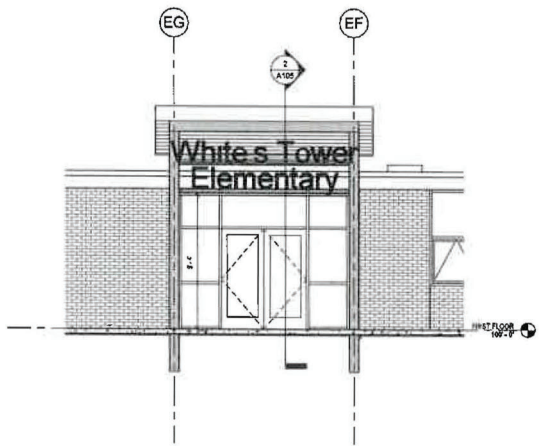
THIS DOCUMENT AND THE IDEAS AND DESIGNS INCORPORATED HEREIN, AS AN INSTRUMENT OF PROFESSIONAL SERVICE, IS THE PROPERTY OF ENBOSS DESIGN, INC. AND IS NOT TO BE REPRODUCED OR TRANSMITTED IN ANY FORM OR BY ANY MEANS, ELECTRONIC OR MECHANICAL, INCLUDING PHOTOCOPYING, RECORDING, OR BY ANY INFORMATION STORAGE AND RETRIEVAL SYSTEM, WITHOUT THE WRITTEN AUTHORIZATION OF ENBOSS DESIGN, INC. ALL RIGHTS RESERVED.



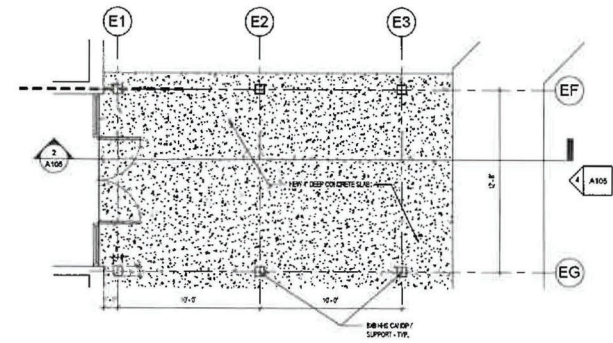
3 FRONT CANOPY PERSPECTIVE
A105 SCALE



2 CANOPY SECTION
A105 SCALE: 1/4" = 1'-0"



4 FRONT CANOPY ELEVATION
A105 SCALE: 1/4" = 1'-0"



1 CANOPY ENLARGED PLAN
A105 SCALE: 1/4" = 1'-0"



EnbossDesign.com 906 Monmouth Street,
B039431-0812 Newport, KY 41071



White's Tower Elementary Renovation
Kenton County School District

2977 Harris Pike
Independence, KY 41051
BG# 25-351

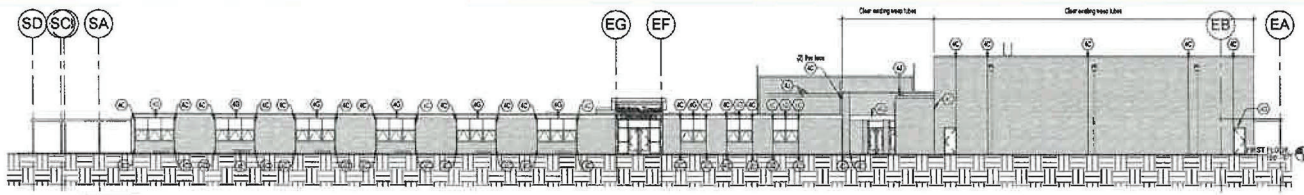
NO.	DESCRIPTION	DATE
1	CD BOARD SUBMITTAL	4/26/2025

ENTRANCE CANOPY

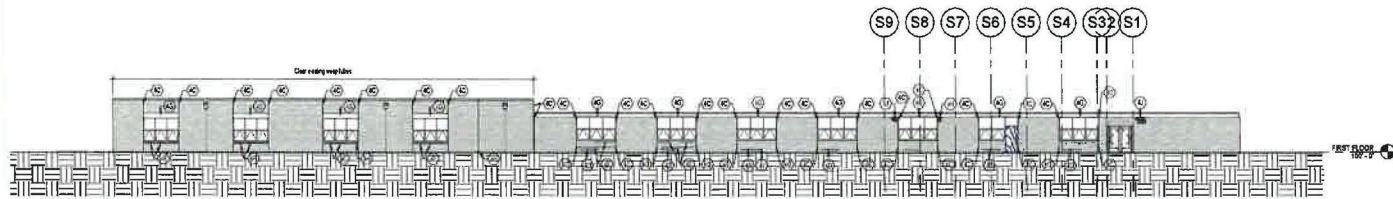
24-073

A105

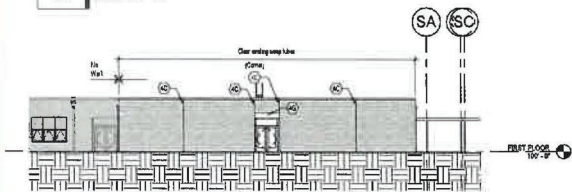
THIS DOCUMENT AND THE IDEAS AND DESIGNS INCORPORATED HEREIN, AS AN INSTRUMENT OF PROFESSIONAL SERVICE, IS THE PROPERTY OF EMBOSS DESIGN INC. AND IS NOT TO BE REPRODUCED OR TRANSMITTED IN ANY FORM OR BY ANY MEANS, ELECTRONIC OR MECHANICAL, INCLUDING PHOTOCOPYING, RECORDING, OR BY ANY INFORMATION STORAGE AND RETRIEVAL SYSTEM, WITHOUT THE WRITTEN AUTHORIZATION OF EMBOSS DESIGN INC. ALL RIGHTS RESERVED.



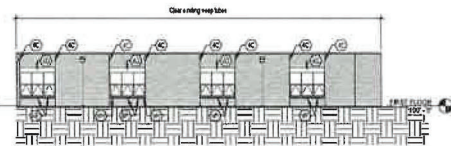
1 EAST ELEVATION
A200 SCALE: 1/16" = 1'-0"



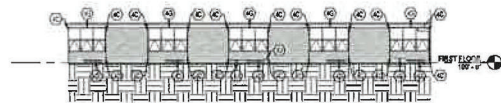
2 SOUTH ELEVATION
A200 SCALE: 1/16" = 1'-0"



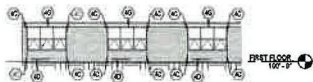
3 WEST ELEVATION - 1994 CLASSROOM WING
A200 SCALE: 1/16" = 1'-0"



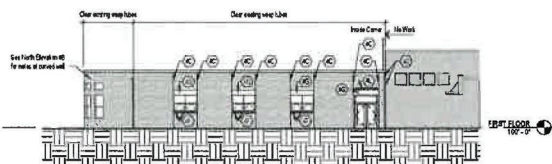
4 NORTH ELEVATION - 1994 CLASSROOM WING
A200 SCALE: 1/16" = 1'-0"



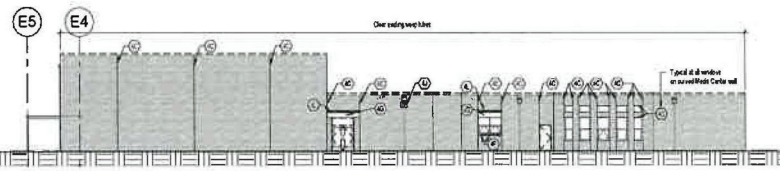
5 NORTH ELEVATION - 1964 CLASSROOMS
A200 SCALE: 1/16" = 1'-0"



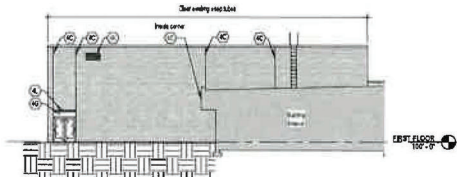
6 WEST ELEVATION - 1964 CLASSROOMS
A200 SCALE: 1/16" = 1'-0"



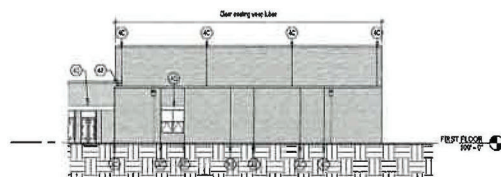
7 WEST ELEVATION - 1994 MEDIA ADDITION
A200 SCALE: 1/16" = 1'-0"



8 NORTH ELEVATION - 1994 GYM/MEDIA ADDITION
A200 SCALE: 1/16" = 1'-0"



9 WEST ELEVATION - 1994 GYM ADDITION
A200 SCALE: 1/16" = 1'-0"



10 SOUTH ELEVATION - 1994 GYM ADDITION
A200 SCALE: 1/16" = 1'-0"

General Maintenance of Masonry Walls:
 - All masonry walls of the school must (SM) addition to be checked and
 - There are four existing brick masonry walls. Two are the original building
 and two additional in the 1993 addition. Field verify to match.
 - See drawings for additional scope of work.

SHEET KEYNOTES

40. CUT OPEN EXPANSION JOINT, REPLACE SACKER ROD & CAULK WITH NEW.
41. REMOVE CAULK AND/OR LOOSE MORTAR AT LEVEL BEARING WIRE WIRE MESH, ENAMEL, PAINT EXPOSED STEEL, INSTALL NEW CAULK AT LEVEL BEARING.
42. OPEN-OUT MORTAR JOINT AT SINK LINE COURSE REINFORCING WIRE MESH, ENAMEL, PAINT EXPOSED STEEL, REPORT WITH MORTAR TO MATCH ADJACENT.
43. CUT OUT TWO ROWS OF RED JOINT UNDER SILL AND REPORT WITH MORTAR TO MATCH ADJACENT.
44. WIRE MESH, STEEL LATH, ENAMEL, PAINT EXPOSED STEEL.
45. REPAIR THE AREA OF BRICK, CUT OUT AND REMOVE TO SOUND CONSTRUCTION.
46. CUT OUT LOOSE AND CRACKING MORTAR, REPORT WITH MORTAR TO MATCH ADJACENT.
47. BRICK REMOVED LOWER OPENING WITH BRICK TO MATCH EXISTING.
48. CUT OUT ENTIRE COURSE OF BRICK, REMOVE FINISH FRAMING, WIRE MESH EXPOSED STEEL, INSTALL NEW FRAMING WITH STAINLESS STEEL, DRIP, REPAIR BRICK TO MATCH ADJACENT.



EmbossDesign.com 908 Moonmouth Street,
 (585)431-6812 Newport, KY 41071



White's Tower Elementary Renovation
Kenton County School District
 2977 Harris Pike
 Independence, KY 41051
 BG#: 25-351

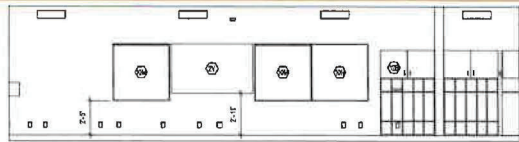
NO.	DESCRIPTION	DATE
1	CD BOARD SUBMITTAL	8/26/2025

EXTERIOR ELEVATIONS

24-073

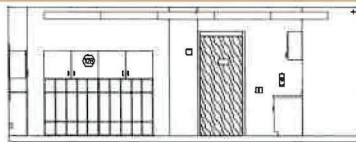
A200

THIS DOCUMENT, AND THE IDEAS AND DESIGN INCORPORATED HEREIN, AS AN INSTRUMENT OF PROFESSIONAL SERVICE, IS THE PROPERTY OF EMBOSS DESIGN, P.C., AND IS NOT TO BE USED, REPRODUCED, COPIED, OR TRANSMITTED IN ANY FORM OR BY ANY MEANS, WITHOUT THE WRITTEN PERMISSION OF EMBOSS DESIGN, P.C. ALL RIGHTS RESERVED.



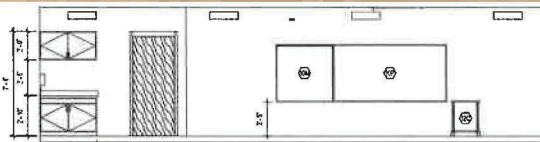
1 1994 CLASSROOM INTERIOR ELEVATION

A700 SCALE: 1/4" = 1'-0"



2 1994 CLASSROOM INTERIOR ELEVATION

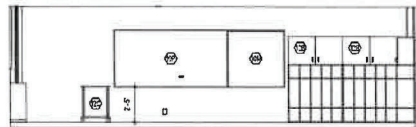
A700 SCALE: 1/4" = 1'-0"



3 1994 CLASSROOM INTERIOR ELEVATION

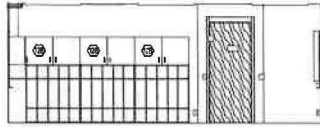
A700 SCALE: 1/4" = 1'-0"

- SHEET KEYNOTES**
- 2V SALVAGE INTERACTIVE FLAT SCREEN AND MOUNT FOR RE-INSTALLATION. COORDINATE WITH OWNER.
 - W3 NEW 4" x 4" x 4" ACOUSTIC WALL PANELS.
 - 10W 4" x 4" x 4" ACOUSTIC BOARD, BOTTOM MOUNTED @ 2'-0" FROM FLOOR. VERIFY LOCATION AND OWNER PRIOR TO INSTALLATION.
 - 10F 4" x 4" x 4" ACOUSTIC BOARD, BOTTOM MOUNTED @ 2'-0" FROM FLOOR. VERIFY LOCATION AND OWNER PRIOR TO INSTALLATION.
 - 10B 4" x 4" x 4" ACOUSTIC BOARD, BOTTOM MOUNTED @ 2'-0" FROM FLOOR. VERIFY LOCATION AND OWNER PRIOR TO INSTALLATION.
 - 10C TOTALING CURVES ABOVE BY OTHER ARCHITECTS. OWNER FURNISHED. CONTRACTOR INSTALLED.
 - 10D TEACHER DESK OWNER FURNISHED, OWNER INSTALLED.



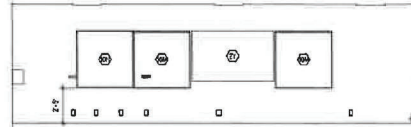
4 1994 CLASSROOM INTERIOR ELEVATION

A700 SCALE: 1/4" = 1'-0"



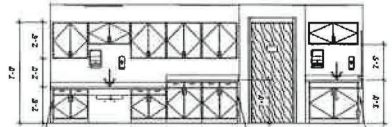
5 1994 CLASSROOM INTERIOR ELEVATION

A700 SCALE: 1/4" = 1'-0"



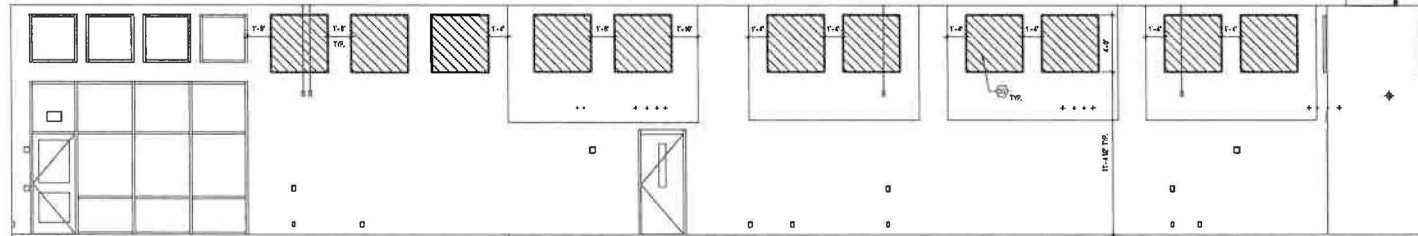
6 1994 CLASSROOM INTERIOR ELEVATION

A700 SCALE: 1/4" = 1'-0"



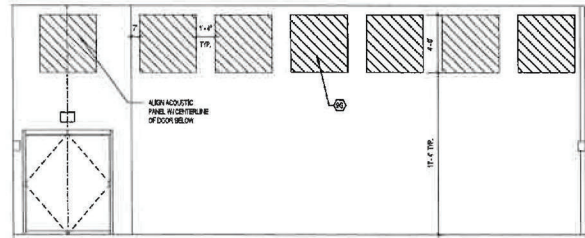
11 INTERIOR ELEVATION - ART CLASSROOM

A700 SCALE: 1/4" = 1'-0"



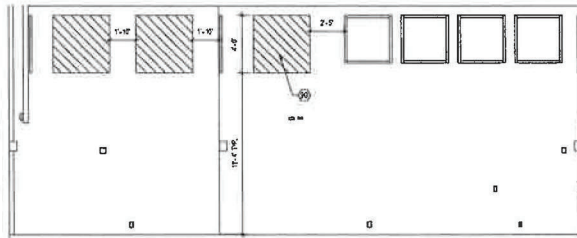
7 INTERIOR ELEVATION - CAFETERIA

A700 SCALE: 1/4" = 1'-0"



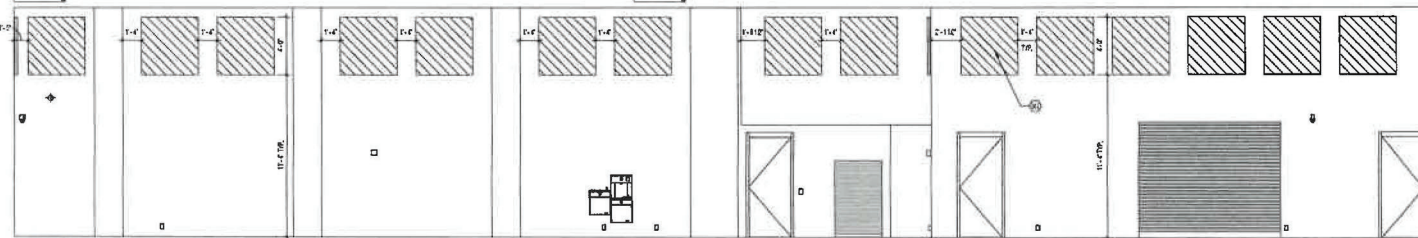
8 INTERIOR ELEVATION - CAFETERIA

A700 SCALE: 1/4" = 1'-0"



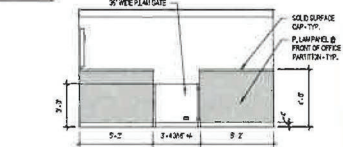
10 INTERIOR ELEVATION - CAFETERIA

A700 SCALE: 1/4" = 1'-0"



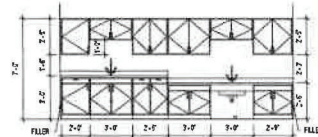
9 INTERIOR ELEVATION - CAFETERIA

A700 SCALE: 1/4" = 1'-0"



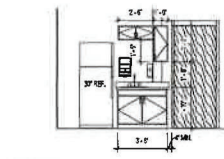
12 RECEPTION OFFICE ELEVATION

A700 SCALE: 1/4" = 1'-0"



13 SCIENCE CLASSROOM

A700 SCALE: 1/4" = 1'-0"



14 FIRST AID MILLWORK

A700 SCALE: 1/4" = 1'-0"

PRINT DATE: 8/28/2025 11:13 AM



EmbossDesign.com 805 Monmouth Street
859431-0812 Newport, KY 41071



White's Tower Elementary Renovation
Kenton County School District
 2877 Harris Pike
 Independence, KY 41051
 BG# 25-351

NO.	DESCRIPTION	DATE
CD BOARD SUBMITTAL		8/28/2025

INTERIOR ELEVATIONS

24-073

A700

