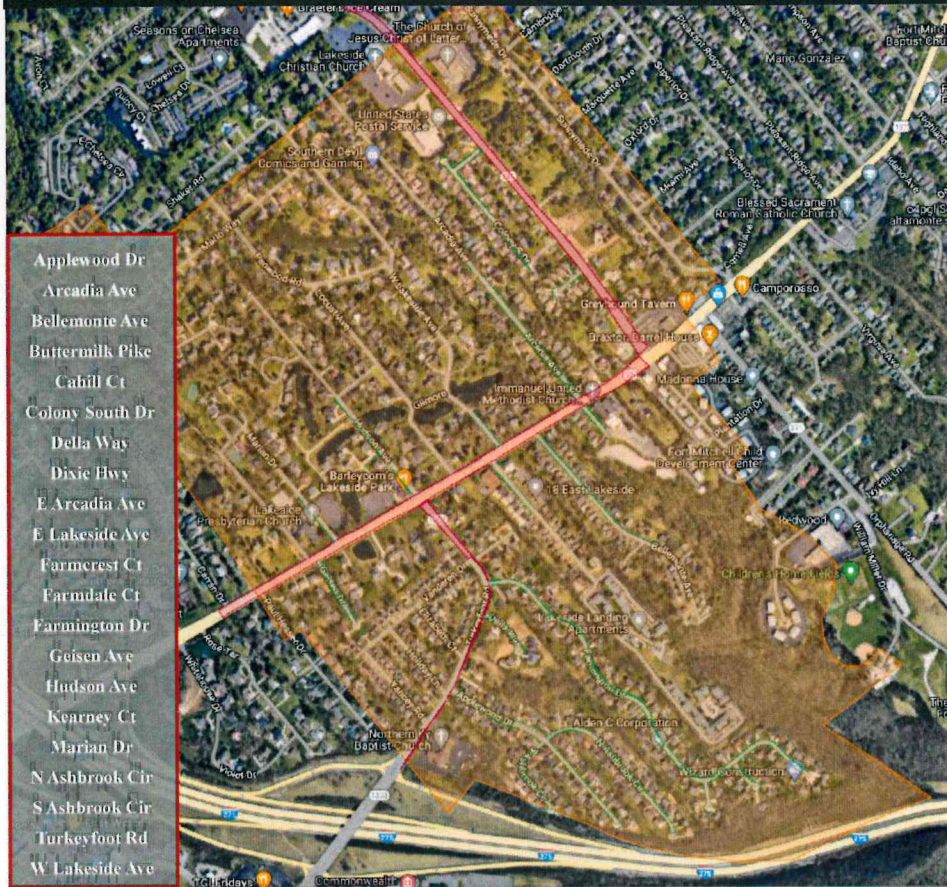




OVERALL PHASE I PROJECT FOOTPRINT



This proposal depicts the repairing of uneven sidewalks for this part of the City of Lakeside Park. The footprint area is highlighted in **RED & GREEN**.

PROJECT GOALS & STATISTICS

- Extend the usable life of the city's concrete assets & walkways.
- Construct a complete sidewalk inventory within designated footprint.
- Eliminate trip hazards within high foot-traffic and right-of-way walk.
- Identify panels in need of demolish and replace within designated footprint.
- 1,839 hazards total identified (1,431 hazards repairable through PCC methods).
- 6,175.75 linear feet of trip hazards that are repairable through PCC methods.
- Overall Footprint Average Max Hazard Height: 0.516".
- Estimated to save a total of **844.29** tons of concrete through PCC Methodology.

The map in this proposal shows the project footprint for trip hazard repair in this part of the City of Lakeside Park. The area has been assessed for trip hazards for audit and trends. The accuracy of these maps is dependent on cellular location technology available, and should be relied upon as approximations.